



Please read this first:

It is the customer's responsibility to determine to his/her own satisfaction that the light poles (or other poles) are able to withstand the increased wind load generated by the installation of one or more banners of a particular size on that pole using top and bottom arm BannerFlex™ brackets.

We recommend that you contact the pole manufacturer or a structural engineer to assist in making this determination. For older poles, we suggest visual inspections to determine the current structural integrity of the base connection as well as other portions of the pole, including the luminaire and its components.

If you have questions concerning bracket installation please do not hesitate to contact one of our banner engineers by Tel:

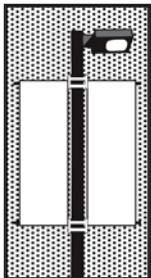
01769 574501
Email: info@bannerflexeurope.com

General Installation Guidelines

- Read these instructions carefully to understand the patented "canting system", how to "rock" the arms in place and how the fiberglass arms keep the banners tight.
- Always verify that any high or wide vehicles will not come in contact with the installed brackets and banners. Make sure the bottom arm is high enough or orientated away from the road side.
- Square utility poles that are over 127mm in each flat dimension will need a "square pole adapter plate". Contact our sales team for this accessory.
- "Fluted" poles sometimes do not allow an installation to "face" a particular direction due to the location of the flutes. We have found that slight angles away from perpendicular, for example, are not objectionable. Contact our sales team for further assistance.
- These instructions specifically explain banding the bracket to the poles. If bolts are used, continue to refer to these instructions for placement and proper use of the "canting feature."

Maintenance Guidelines

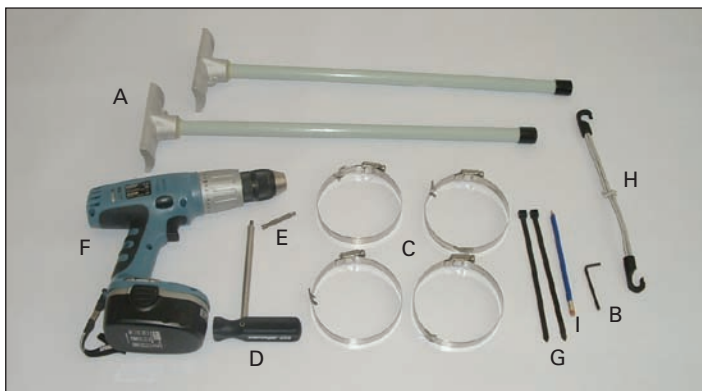
- Your BannerFlex brackets will give you years of trouble-free service when installed and maintained properly.
- It is recommended that a new installation be visually inspected approximately 30 days after initial installation to insure that banner brackets are tight and trim, and every 60 days thereafter. Also, the same inspection should take place after unusually heavy windstorms as abnormal gusts and flying debris can affect the quality of an installation.
- Brackets that are properly installed with Tamtorque geared banding clips or have been double banded with 19mm stainless steel banding should not loosen. If this does occur, verify that the banding operation was performed correctly and the installation is tight in accordance with these instructions and of the Banjax equipment if used.
- Banners that "whip" and "flutter" around with brackets installed top and bottom are not installed properly. This will cause undue wear and tear on the banners and may cause the banners eventually to release from one of the brackets, which can heavily damage the banners. Avoid this problem with inspections as suggested above. Repair loosened banners immediately.
- Banners with puckers or stress lines along the fabric are too tight. Loosen and adjust upper and lower arms until the banner is taut but smooth'.



Please read all the way through before beginning installation:

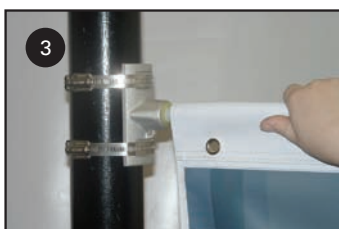
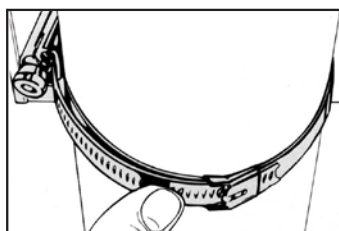
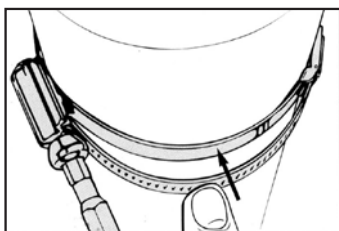
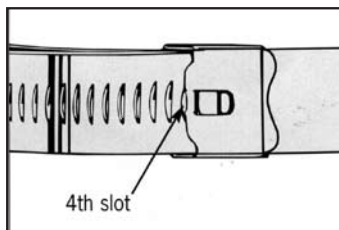
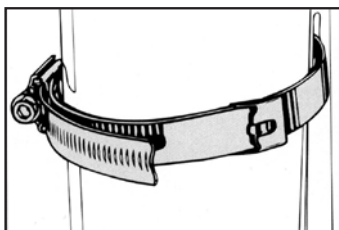
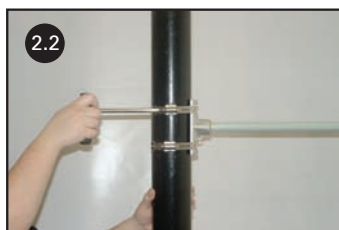
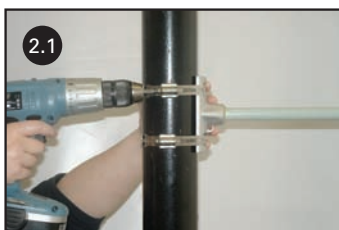
Start with the top banner bracket by mounting top main casting(s) first and complete all procedures, including mounting the banner(s), before mounting lower casting(s) and lower part of banner(s). Use a common sense approach to the height you install the banner but as a

general rule do not install the bottom arm at a height less than 3m. Be wary of the passing of wide/high vehicles when choosing the orientation of the banners – if the column is very close to the kerb you may wish to point the banners towards the pavement.



What you will require for installation:

- A) Banner arm and arm casting (x2) with plastic end caps
- B) Allen key
- C) Tamtorque geared banding clips (x 4)
- D) Tamtorque T bar tool
- E) Tamtorque drill attachment (advised)
- F) Cordless drill/driver (advised)
- G) Nylon zip ties (x 2)
- H) Shock cord with hooks (or any type of gripper tape)
- I) Pencil
- J) Hand snips (not shown)



- 1) Install the top banner arm first. Using shock cord with hooks (or gripper tape), temporarily hold arm in place against the lamp column at the desired height.
- 2) Pass the Tamtorque geared bands around the top part and the bottom part of the casting. Take up the slack with cordless drill and finally tighten by hand with Tamtorque T-Bar driver. Tidy any excess banding that has passed through the gearing under the stainless steel buckle.
- 3) Slide banner (top hem) on arm so it is very close to the casting. Eyeletted side of banner is closest to the column.
- 4) Secure the banner with nylon cable ties through eyelet on banner and through small hole in arm casting. Do not over-tighten as this may cause banner to wrinkle, snip excess cable off with snips. This holds banner onto brackets acting as a safety measure.
- 5) Now you are ready to mount lower arm. Slide banner onto bottom arm and pull tight. Repeat steps 2 and 4.